

General Description

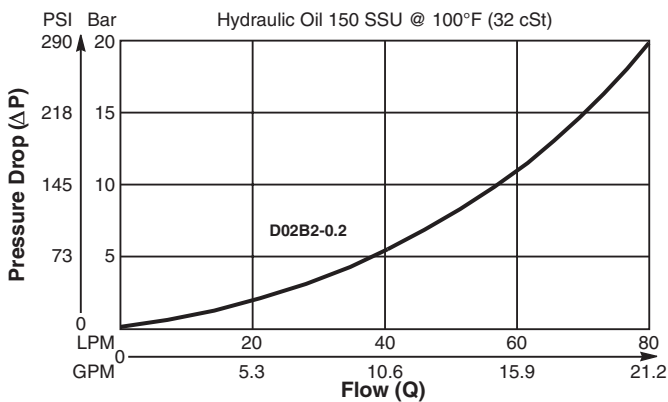
Ball Type Check Valve.
 For additional information see Technical Tips on pages CV2-CV3.

Features

- Low leakage - less than 3 drops/min.
- Ball type construction for cost effective design
- Single and dual pilot pistons available to create pilot to open check
- Range of cracking pressures available - up to 25 Bar (362 PSI)
- Good contamination tolerance
- All external parts zinc plated

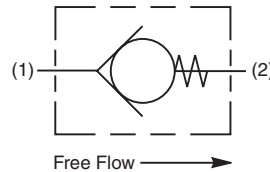
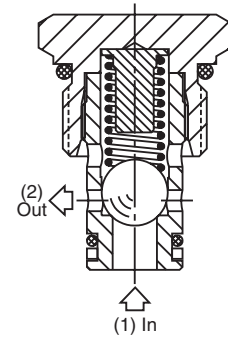
Performance Curve

Pressure Drop vs. Flow (Through cartridge only)

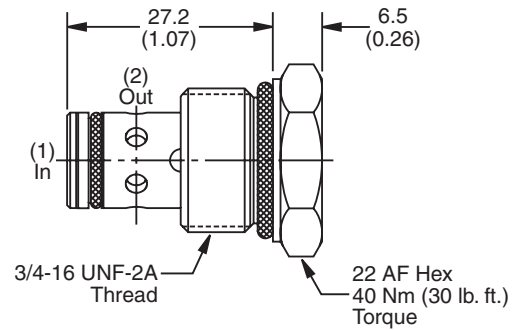


Specifications

| | |
|--------------------------------|--|
| Rated Flow | 80 LPM (21 GPM) |
| Nominal Flow @ 7 Bar (100 PSI) | 45 LPM (12GPM) |
| Maximum Inlet Pressure | 420 Bar (6000 PSI) |
| Leakage at 150 SSU (32 cSt) | Less than 3 drops/min. |
| Cartridge Material | Steel operating parts hardened steel ball. |
| Operating Temp. Range/Seals | -34°C to +121°C (Nitrile Buna-N) (-30°F to +250°F) -26°C to +204°C (Fluorocarbon) (-15°F to +400°F) |
| Fluid Compatibility/Viscosity | Mineral-based or synthetic with lubricating properties at viscosities of 45 to 2000 SSU (6 to 420 cSt) |
| Filtration | ISO-4406 18/16/13, SAE Class 4 |
| Approx. Weight | 0.05 kg (0.11 lbs.) |
| Cavity | C08-2 (See BC Section for more details) |



Dimensions



Ordering Information

D02B2 — **N**

Ball Type Check Valve Cracking Pressure Seals

Highlighted represents preferred options that offer the shortest lead times. Other options may be available, but at extended lead times.

| Code | Cracking Pressure |
|------------|-----------------------------|
| 0.2 | 0.2 Bar (3 PSI) Std. |
| 1.0 | 1.0 Bar (15 PSI) |
| 2.1 | 2.1 Bar (30 PSI) |
| 3.4 | 3.4 Bar (50 PSI) |
| 6.0 | 6.0 Bar (87 PSI) |

| Code | Seals |
|----------|----------------|
| N | Nitrile |

| Kit | Part Number |
|-------------------|-------------|
| Nitrile Seal | SK30515N-1 |
| Fluorocarbon Seal | SK30515V-1 |

Order Bodies Separately
 See section BC

B08 — **2** — **6T**

08 size 2-Way Cavity Port Size

| Code | Porting / Body Material |
|------|--------------------------|
| 6T | SAE-6 / Steel (5000 PSI) |

| | |
|-----------|----------------------|
| CV | Check Valves |
| SH | Shuttle Valves |
| LM | Load/Motor Controls |
| FC | Flow Controls |
| PC | Pressure Controls |
| LE | Logic Elements |
| DC | Directional Controls |
| SV | Solenoid Valves |
| PV | Proportional Valves |
| CE | Coils & Electronics |
| BC | Bodies & Cavities |
| TD | Technical Data |